

Unifine® Syringes



Unifine® Syringes are available in multiple specifications for general purpose injection and aspiration procedures, supporting patient care for a range of medical scenarios.

Unifine® Safety Needles



Unifine® Safety Needles combine a built-in safety mechanism with a variety of needle lengths and gauges from 18G to 30G, ensuring the user is protected from needlestick injuries by securely shielding the needle upon removal.

Unifine® Syringes

| Tip | Capacity and Graduation |
|---|---|
|  Luer lock central tip | 1mL 0.1mL, 2mL 0.5mL, 3mL 0.5mL, 5mL 1mL, 10mL 1mL, 20mL 5mL, 30mL 10mL, 50-60mL 10mL |
|  Luer slip central tip | 1mL 0.1mL, 2mL 0.5mL, 3mL 0.5mL, 5mL 1mL, 10mL 1mL |
|  Luer slip side tip | 10mL 1mL, 20mL 5mL, 30mL 10mL, 50-60mL 10mL |
|  Catheter tip | 50-60mL 10mL |

Unifine® Safety Needles

| | Gauge | Length |
|---|-------|--|
|  1 1/2" 38mm | 18G | 1 1/2" 38mm |
|  1 1/2" 38mm | 19G | 1 1/2" 38mm |
|  1" 25mm | 20G | 1" 25mm |
|  1 1/4" 32mm | 21G | 1" 25mm, 1 1/4" 32mm, 1 1/2" 38mm |
|  1" 25mm | 22G | 1" 25mm, 1 1/4" 32mm, 1 1/2" 38mm |
|  1" 25mm | 23G | 1" 25mm, 1 1/4" 32mm, 1 1/2" 38mm |
|  5/8" 16mm | 25G | 5/8" 16mm, 1" 25mm, 1 1/4" 32mm, 1 1/2" 38mm |
|  1/2" 13mm | 27G | 1/2" 13mm |
|  1/2" 13mm | 29G | 1/2" 13mm |
| 1/2" 13mm | 30G | 1/2" 13mm |

For more information, visit [owenmumford.com](https://www.owenmumford.com)

© Copyright Owen Mumford 2024
USA&USN-PORTFOLIO-LT-EN-GL/MCC/0524/01



Syringes and Safety Needles

Designed with
safety in mind



Unifine® Syringes

Unifine® Safety Needles



LUER
LOCK TIP



CENTER TIP
LUER SLIP



SIDE TIP
LUER SLIP



CATHETER TIP
LUER SLIP

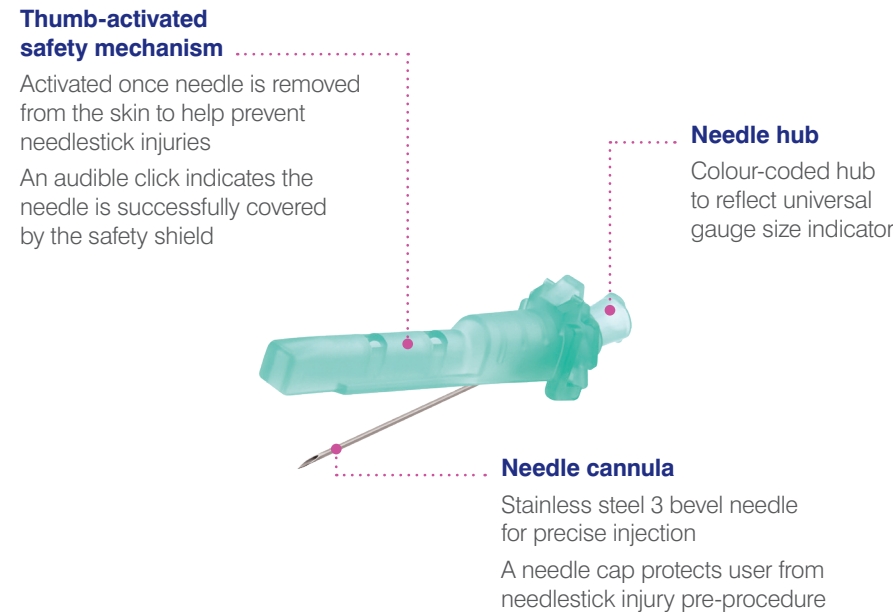
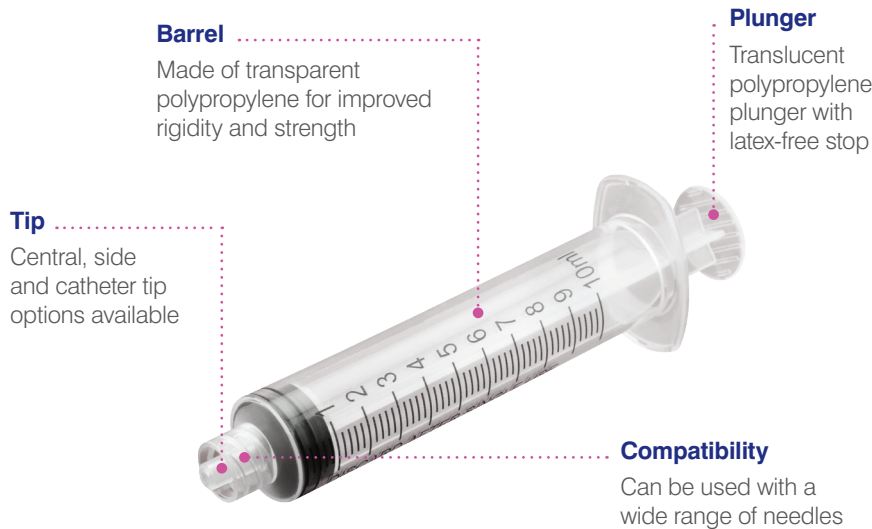


FLIP TO
SHIELD



Owen Mumford Ltd., Brook Hill, Woodstock, Oxfordshire OX20 1TU, United Kingdom
T : +44 (0)1993 812021 E : info@owenmumford.com [owenmumford.com](https://www.owenmumford.com)

OWEN MUMFORD



Syringe tip options in more detail



- Luer lock tip**
- Secure threading designed to help prevent accidental disconnection from needle
 - Threaded design also helps prevent needle from backing out or loosening during use

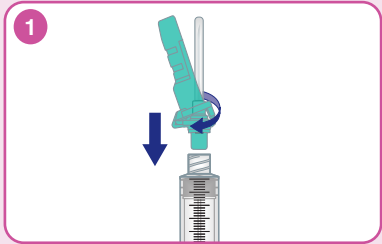


- Luer slip tip**
- Design is ideal for routine procedures with minimal risk of pressure or force on needle
 - Friction-fit connection for convenient assembly with needles

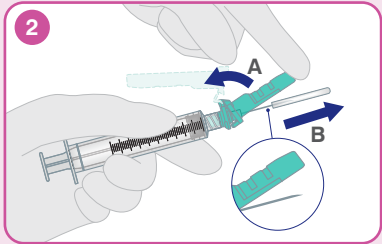


- Catheter tip**
- Large capacity syringe designed to facilitate irrigation or flushing procedures
 - Design allows for more controlled flow of liquid

How to use

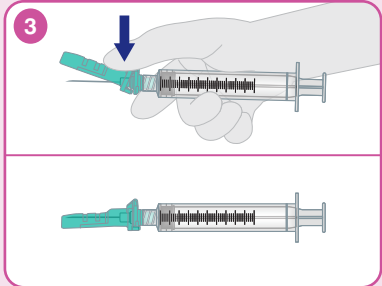


Open the blister pack and attach the safety needle in a clockwise motion to ensure it is firmly attached to the syringe.



Pull back the protective shield (A). Hold the syringe with one hand and remove the needle cap with the other hand (B). Use the syringe for administration or aspiration of medication in accordance with your facility's procedure.

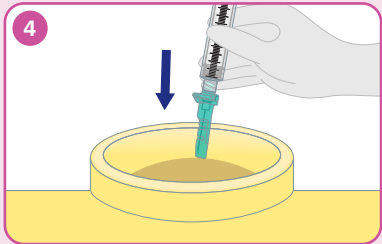
Bevel up = safety shield up



Activate the safety mechanism immediately after use. Place your thumb or index finger on the safety shield and push the shield onto the needle until there is auditory confirmation that it has been activated. Visually check that the needle is covered.

Use a one-handed technique and activate away from yourself and others. Use a slow, firm activation of the safety shield to achieve greatest safety.

Technique: place thumb high on the safety shield. Place thumb over the two ridges on the shield to help achieve the correct positioning for safety.



Discard the safety needle and syringe as one unit immediately after use in accordance with your facility's procedure.